



Ingham County

# 4-H Family News

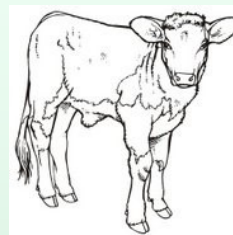
March 15, 2019

## Weekly Happenings

Mar 17—Steam Sundays—10 am—4:30 pm—Fairgrounds—China Art Exchange  
 Mar 20—4-H Council Meeting—7:00 pm—Hilliard  
 Mar 24—Dairy Feeder Tagging—2-4 pm—Fairgrounds  
 Mar 27—Apr 7—TSC Paper Clover Days—Williamston  
 Apr 7—Steam Sundays—10 am—4:30 pm—Fairgrounds—Mission to Mars  
 Apr 9—Written Communication Workshop—6:30 pm—Hilliard (RSVP required)  
 Apr 10—Horse Committee Meeting—7 pm—Hilliard  
 Apr 17—4-H Council Meeting—7 pm—Hilliard  
 Apr 19—4-H Office Closed—Good Friday



## Dairy Feeder Tagging



**Sunday  
March 24  
2-4 pm**

## Exploration Days.....June 19-21, 2019

This fun MSU pre-college program could be the highlight of your summer - it could even change your life! About 2,500 youth (ages 11-19) and chaperones from across Michigan attend annually.

4-H Exploration Days registration goes from mid-March through April with session assignments made on a first-come, first-served basis. As you select your session choices, be sure to watch for age restrictions! **Age requirements for sessions are based on your age as of January 1.** Visit [https://www.canr.msu.edu/4\\_h\\_exploration\\_days/](https://www.canr.msu.edu/4_h_exploration_days/) for online registration book and forms.

- There'll be more than 200 session choices held on and off campus. You'll choose one or two for your three-day stay.
- You'll live in a Michigan State University dorm and eat in the cafeteria—just like MSU students do.
- Sessions are taught by people who know their stuff, including MSU faculty members, 4-H volunteers and staff members and other experts.
- It's not all sessions! There's plenty of time for fun, including swimming, skating, souvenir shopping, exploring, bowling, basketball—even a great dance Thursday night.
- **The 2019 cost is \$220.00.** There is an additional \$20 4-H participation fee for youth not yet enrolled in 4-H. The fee includes meals, a shared room in a dorm, sessions and a t-shirt.
- **Registration opens Tuesday, March 19, 2019 at 9:00am.** Registration books that show all of the sessions and details on everything happening during Exploration Days will be available online and from county Extension offices early March. Registrations are entered by the county staff in the order received.



## Contact Us

Eric Dobbastine  
4-H Program Coordinator  
dobbbras1@msu.edu

Glenda Weiss  
4-H Program Coordinator  
weissgls@msu.edu

Lori Guy  
Office Coordinator  
lguy@ingham.org

Michigan State University Extension  
4-H Youth Development  
Ingham County  
121 E. Maple Street  
PO Box 319  
Mason, MI 48854  
Ph: 517.676.7207 • Fax: 517.676.7288  
msue.ingham@county.msu.edu

## Ingham County 4-H

<https://www.canr.msu.edu/ingham/4-h/>

## Facebook

<https://www.facebook.com/Ingham4H>

Michigan State University is an affirmative action/equal opportunity employer. Michigan State University Extension programs and materials are open to all without regard to race, color, national origin, gender, gender identity, religion, age, height, weight, disability, political beliefs, sexual orientation, marital status, family status or veteran status. Issued in furtherance of MSU Extension work, acts of May 8 and June 30, 1914, in cooperation with the U.S. Department of Agriculture. Jeffrey W. Dwyer, Director, MSU Extension, East Lansing, MI 48824. This information is for educational purposes only. Reference to commercial products or trade names does not imply endorsement by MSU Extension or bias against those not mentioned. The 4-H Name and Emblem have special protections from Congress, protected by code 18 USC 707.



## LOCAL NEWS



### MSU 4-H Pre-College Scholarship Recipients

It is my pleasure to announce the recipients of the \$2,000 MSU Pre-College Scholarship. This scholarship is applied to the recipients first year as a degree-seeking student at MSU and is available to youth in the 8<sup>th</sup>, 9<sup>th</sup>, or 10<sup>th</sup> grades that participated in a MSU Pre-College Program the summer before applying. MSU Extension 4-H Youth Development is proud to offer 6 of these programs: 4-H Renewable Energy Camp, 4-H Animal and Vet Science Camp, Great Lakes Natural Resources Camp, 4-H Exploration Days, 4-H Capitol Experience and 4-H Youth Conservation Council.

The MSU Pre-college scholarship selection committee reviewed many strong applications and notified us that a total of 62 youth have been awarded the scholarship. Of those awarded, three were from Ingham County: **Julia Marhofer** (*Happy Hustlers 4-H Club*), **Brenna Marshall** (*Deep Roots 4-H Club*), and **Hannah Marshall** (*Happy Hustlers 4-H Club*).

Please help me congratulate them for receiving this award and financial support towards their post-secondary education.

### 4-H STEAM Sundays (RSVP Required)

STEAM Sunday's are designed to give youth ages 8-19 the opportunity to participate in STEAM themed programs without having to join a formal 4-H club. On each scheduled Sunday, youth will dive deep into topics that explore a variety of discipline's. Youth are free to pick and choose which workshops they would like to attend or attend them all.

#### COST:

- Current 4-H member: **FREE**
- Non 4-H member: one-time \$20 annual participation fee. (Scholarships available)
- May be a small material fee associated with individual STEAM Sunday activities.

To participate in STEAM Sunday workshops, youth must be registered by the Monday prior to the workshop date. To register go into 4honline.com and add each workshop as an additional club, or email Ashleigh Apel at [apelashl@msu.edu](mailto:apelashl@msu.edu) to RSVP your spot. Agendas for each workshop will be sent out Tuesday morning prior to workshop date to registered youth only to inform you of any potential supply fees and what youth need to bring for that day.

For class descriptions, please see the flyer on page 3 of the Cloverleaf. Also, take a look at other spin class sessions being offered.

For more information, contact SPIN Club Coordinator Ashleigh Apel, 517-887-4581 or [apelashl@msu.edu](mailto:apelashl@msu.edu)

**DATE & TIME:**  
**Sunday's 10am-4:30pm**

**Apr 7: Mission to Mars**  
**Apr 28: Environmental Science & Citizenship**  
**May 5: Ornithology– Birds**

**\*Must be registered by the Monday prior to workshop**

## NEW WEBSITE

Take a look at our new website!

Please change your bookmarks to reflect moving to the MSU server.

<https://www.canr.msu.edu/ingham/4-h/>



## Dairy Market Feeder Tagging

If you plan to show a dairy market feeder calf at the Ingham County Fair in 2019, please mark your calendar for this required tagging date. Calves can ONLY be tagged prior to 3/24/19. If you are unable to make it to the tagging, you must contact the Superintendent to get tags. Those that don't weigh in at the fairgrounds will not be eligible for rate of gain.



**Sunday, March 24, 2019**

**2:00-4:00 p.m.**

**Ingham County Fairgrounds**

\$2.00 charge on day of tagging for every animal tagged.

Contact Superintendent Jeff Graf at 749-2978 or the 4-H Office at 676-7207 with questions.

## 4-H Donation Request Form

If you are interested in donating proceeds from the sale of your livestock /still life to a charity/cause, please complete the donation request form on the website at <https://www.canr.msu.edu/ingham/4-h/fair-info/auctions>. This form is due by June 15, 2019 to the 4-H Office.



## Project Areas With Judging Time/Date Changes for 2019



Fine Arts – Friday, 7/26 from 9-11:30

Dogs – Saturday, 7/20 beginning at 9 a.m.

## Save the Dates:

### Market Project

Apr 9—Written Comm.

May 14—Verbal Comm.

June 11—Meeting Buyers

July 9—Breaking Even

### Dairy Market Feeders

Mar 24— Feeder Tagging  
2-4 pm

### Sheep

May 11— Sheep Tagging  
11 am—1:30 pm

### Goat

May 4— Goat Tagging  
9-12 am

### Swine

May 15—Hair follicles due  
to 4-H Office

### Rabbit

June 26— Rabbit Tattoo  
6-7 pm



Be sure to join our new swine Facebook group:

## Ingham County 4H/FFA Swine Program





## Gratiot County Open 4-H Rabbit,



### Cavy and Poultry Show

May 11, 2019

Gratiot County Fair Grounds

706 S. Lincoln Road

Alma MI 48801

Registration begins at 7:30am. Entries must be in by 8:30 am

Rabbit show begins at 9 am

Poultry Show begins at Noon

Entry Fees: \$2.00 per class

- Showmanship: Juniors (8-11), Intermediate (12-14), Senior (15-19) Cloverbuds 7 and under.
- Ages as of January 1, 2019
- Breed Classes (Rabbit & Cavy only): All breeds that are recognized are eligible for show. All breeds will be judged by ARBA Standard of Perfection.
- Chickens will be pullorum tested at registration.

#### Rabbit Show Jumping Competition

- Practice and Training 8 am- 10 am
- Competition with poles 10am-12pm \$1.00 per run donation.
- High Jump begins @ 11 am-\$1.00 for 3 attempts
- Prizes awarded for top 3 competitors.

Donuts and coffee for purchase in the morning and pizza by the slice for sale around lunch.



Hosted by The Gratiot County Lucky Stars 4-H club and Cosponsored by The Gratiot 4-H Leader's Council

MICHIGAN STATE UNIVERSITY Extension

MSU is an affirmative-action, equal opportunity employer. MSU Extension programs and material are open to all without regard to race, color, national origin, gender, gender identity, religion, age, height, weight, disability, political beliefs, sexual orientation, marital status, family status, or veteran status.



Two, One-Day Shows  
 Memorial Day Weekend  
 Show 1 - Saturday May 25th, 2019  
 Show 2 - Sunday May 26th, 2019

Hillsdale County Fairgrounds  
 115 S. Broad Street  
 Hillsdale, MI 42942

<https://saulktrailpoultry.wixsite.com/saulktrailshow>



MICHIGAN STATE UNIVERSITY Extension

## 4-H Grows Here: Foster Community Garden SPIN Club Series

#### DATE & TIME:

**Soil Science Club:**  
Saturdays 10-11am Apr 13-May 18

**Seed Science Club:**  
Mondays 6-7pm June 3-July 8

**Pollinators Club:**  
Mondays 6-7pm Jul 15-Aug 12

**Food & Nutrition Camp:**  
August 19-23 10:30am-12pm

**Junior Master Gardener Club:**  
Dates and time vary, contact club leader for more information.

#### LOCATION:

Foster Community Garden  
2401 Marcus St., Lansing, MI 48912

#### COST:

Current 4-H member: Free  
Non 4-H member: One time, annual \$20 4-H participation fee.  
Scholarships available to aid in cost to families in need.  
Go to [mi.4honline.com](http://mi.4honline.com) to register in the clubs.

#### CONTACT US:

**SPIN Club Coordinator:** Ashleigh Apel; 517-887-4581; [apelashl@msu.edu](mailto:apelashl@msu.edu)  
**Club Leader & Volunteer:** Sara Jaruzel; 810-881-2355; [sara\\_jaruzel@yahoo.com](mailto:sara_jaruzel@yahoo.com)



**TARGET AUDIENCE:** This program is offered to youth interested in learning more about gardening and the way a garden functions and produces healthy food. The suggested age for this program is youth between 10-14 years of age as of Jan 1, 19. Limited spots available, flexibility of age if not in age range and would still like to join.

**PROGRAM SUMMARY:** The Foster Community Garden 4-H SPIN Club series is designed to help youth learn, grow, and expand their knowledge of gardening and all the aspects there is to it. Youth can choose to participate in all, one, or any combination of the SPIN club series. Although each club is designed to concentrate on a specific topic youth will still be able to build up and will not lose any value to the clubs if they are not able to attend every club and the club meetings. Youth will have hands on opportunities to work in the garden that is supplemented with the educational components in the club. Youth will also get the chance to earn their Junior Master Gardener certification if they choose by completing some core requirements. Contact Sara Jaruzel for more information.

**Soil Science Club:** Soil isn't dirt! Explore the vital roles soils play in supporting life on our planet and in the vegetable garden. Investigate soil samples, get to know worms, and plant part of the garden.

**Seed Science Club:** Explore the anatomy of seeds, life cycle of plants, seed viability, how to plant and care for a garden, edible seeds and more!

**Pollinators Club:** What is a pollinator? Who does it and how? Why is it important and how can we support pollinators? Learn to identify pollinators, including bees and butterflies in the garden and the plants they like most!

**Food and Nutrition Camp:** Work in the garden and learn how to harvest and prepare produce into delicious recipes. Get an overview of storage and preservation methods. Gain understanding in nutrient profiles and health benefits of the fresh garden foods you are eating.

MSU is an affirmative-action, equal-opportunity employer. Michigan State University Extension programs and materials are open to all without regard to race, color, national origin, gender, gender identity, religion, age, height, weight, disability, political beliefs, sexual orientation, marital status, family status, or veteran status. Persons with disabilities have the right to request and receive reasonable accommodations.



MICHIGAN STATE UNIVERSITY Extension

## Make the Most of Your 4-H Market Project

#### DATE & TIME:

Beginning January 8th, every second Tuesday until July at 6:30 p.m.

#### LOCATION:

Ingham County Fairgrounds, Mason, MI-Community Hall

**COST:**  
Free

**MONTHLY SCHEDULE**  
 January— Goal Setting  
 February—Record Keeping  
 March—Budgeting  
 April—Written Communication  
 May—Verbal Communication  
 June—Practice Meeting Buyers  
 July—Breaking Even



#### WHO SHOULD ATTEND:

Ingham County 4-H and FFA youth participating in any auction at the fair. You can choose to participate in one or all of the series.

#### DESCRIPTION:

Develop your marketing and communication skills while marketing your 4-H auction project. Develop your skills to effectively communicate with your potential buyers before and after the auction.

#### PRE-REGISTRATION BY THE FIRST FRIDAY OF THE MONTH

Please RSVP at <https://goo.gl/forms/ZcOaRObMyMB7r6712>  
Or Contact Glenda at [weissgle@msu.edu](mailto:weissgle@msu.edu); (517)676-7303

#### CONTACT:

Glenda Weiss at [weissgle@msu.edu](mailto:weissgle@msu.edu) or (517) 676-7303

MSU is an affirmative-action, equal-opportunity employer, committed to achieving excellence through a diverse workforce and inclusive culture that encourages all people to reach their full potential. Michigan State University Extension programs and materials are open to all without regard to race, color, national origin, gender, gender identity, religion, age, height, weight, disability, political beliefs, sexual orientation, marital status, family status or veteran status. Persons with disabilities have the right to request and receive reasonable accommodations.

## PROGRAMS & WORKSHOPS

5



### 4-H Great Lakes and Natural Resources Camp

August 5–11, 2018  
Camp Chickagami  
Presque Isle,  
Michigan

**Join other teens from across the state to have the time of your life!**

**Who can attend:**

Teens aged 13 to 15 or entering 8th to 10<sup>th</sup> grades fall of 2018.

**Reasons to attend:**

- Have fun and make new friends!
- Learn about natural resources & the Great Lakes ecosystems.
- Explore career possibilities.
- Learn from natural resources experts.

- Try new things like kayaking, snorkeling and using GPS.
- Gain skills and memories you'll cherish forever!

**Cost:**

- \$375 for campers who are 4-H members
- Youth who are not 4-H members pay an additional \$20

**Don't wait . . .**

- Enrollment is limited
- Applications due by May 1, 2018

**MICHIGAN STATE UNIVERSITY | Extension**

MSU is an affirmative action/equal opportunity employer.

[http://msue.anr.msu.edu/program/info/4\\_h\\_great\\_lakes\\_natural\\_resources\\_camp](http://msue.anr.msu.edu/program/info/4_h_great_lakes_natural_resources_camp)

Registration available for the 4-H Animal & Veterinary



### Science Camp

The 4-H Animal & Veterinary Science Camp is now accepting applications through April 3.

This five-day pre-college program held at Michigan State University is open to 4-H members between the age of 13 and 17.

Youth will explore fields related to animal and veterinary medicine as well as participate in numerous hands-on learning activities.

Learn more and register today at [https://www.canr.msu.edu/4\\_h\\_animal\\_veterinary\\_science\\_camp/](https://www.canr.msu.edu/4_h_animal_veterinary_science_camp/).

### World Food Prize

The World Food Prize Michigan Youth Institute is a life-changing experience coordinated by Michigan 4-H and Michigan State University where high school students engage with local leaders and experts on critical global challenges, participate in hands-on activities, and explore exciting ways to make a difference in Michigan and around the world. Students research issues they care about, and propose their ideas to solve these grand challenges. The Michigan Youth Institute is hosted by Michigan State University with the generous support of the MSU College of Agriculture and Natural Resources, MSU International Studies and Programs, Michigan 4-H,

<b>SAVE</b>	 <b>May 9 2019</b>
<b>CHOOSE</b>	 
<b>ATTEND</b>	
<b>CHANGE</b>	
<p><a href="http://www.canr.msu.edu/wfpmiyi/">www.canr.msu.edu/wfpmiyi/</a> <b>MICHIGAN STATE UNIVERSITY   Extension</b></p>	

Michigan State University  
Small Poultry Flock Owner Management Symposium

Session Topics Offered:

- Egg Layer Housing & Management
- Egg Layer Nutrition
- Meat Bird Housing & Management
- Meat Bird Nutrition
- Avian Diseases

Audience:

Small poultry flock owners, including youth, who are interested in learning more about poultry management and diseases.

Find out more:

For more information contact your county MSU Extension office or contact Katie Ockert at ockertka@msu.edu. Accommodations for persons with disabilities may be requested with registration submission.

Cost:

\$45 which includes program materials and lunch

To Register Visit:

[https://commerce.cashnet.com/msu\\_3645](https://commerce.cashnet.com/msu_3645)

All fees must be paid online to reserve your spot.



April 27, 2019  
Michigan State  
University,  
Anthony Hall  
9 a.m. – 4 p.m.

The Michigan Small Poultry Flock Symposium is being presented by Michigan State University Extension and the Michigan State University Department of Animal Science.

MICHIGAN STATE UNIVERSITY | Extension

MSU is an affirmative-action, equal-opportunity employer. Michigan State University Extension programs and materials are open to all without regard to race, color, national origin, gender, gender identity, religion, age, height, weight, disability, political beliefs, sexual orientation, marital status, family status or veteran status.

## 4-H Partners with JOANN for 'Clovers for Kids' Campaign

JOANN stores are helping 4-H bring more hands-on programs to local communities across the nation to inspire kids to lead lives with their head, hands, and hearts. Between March 1 – April 30, 2019 visit your local JOANN store and purchase a clover tear away at the register for either \$1 or \$4. \$4 purchases come with a \$4 off coupon for a later purchase. 100% of the funds donated go back to 4-H with 70% going back to the local states' 4-H program.

In addition, JOANN wants to support individual 4-H'ers involvement by providing a rewards card for 4-H members, leaders, staff, and parents. The rewards card gives holders 15% off their purchase every day.

To sign up go to <https://www.joann.com/4-h/>



## STATE 4-H GOAT EXPO

Contests:

- Quiz Bowl
- Breed Judging
- Skill-a-thon
- Illustrated talk
- Creative Writing
- Educational Posters
- Arts & Crafts
- Extemporaneous Public Speaking

Deadline; April 5

Cost:

\$6per participant, \$4 per contest

Age Requirements:

All exhibitors must be aged 8 to 19 as of January 1, 2019. Want to become a 4-H member? Contact your county MSU Extension Office today!

Find out more...

For more information contact your county MSU Extension office or call Katie Ockert at (517) 432-5270 or ockertka@msu.edu Accommodations for persons with disabilities may be requested on your registration form.

To Register visit

<https://events.anr.msu.edu/2019goatexpo/>



April 13, 2019  
Michigan State  
University, Anthony  
Hall  
East Lansing, MI

The Michigan 4-H Goat Show is sponsored by Michigan 4-H Youth Development Programs, Michigan State University Extension.

MICHIGAN STATE UNIVERSITY | Extension

MSU is an affirmative-action, equal-opportunity employer. Michigan State University Extension programs and materials are open to all without regard to race, color, national origin, gender, gender identity, religion, age, height, weight, disability, political beliefs, sexual orientation, marital status, family status or veteran status.



National 4-H Council is gearing up for the fall TSC Paper Clover Promotion to be held **March 27—April 7, 2019**. Please encourage your friends and family to visit their local TSC store during this time and purchase a Paper Clover for \$1. Proceeds from sales go toward national, state, and local 4-H programs where the store is located.



## Earl Threadgould Scholarship

**Due April 15, 2019**

Receive a \$350 scholarship for college. To be eligible, you must be accepted for full-time study at an accredited post-secondary college or other school. Please submit the form from <https://www.canr.msu.edu/ingham/4-h/awards-scholarships>, a letter of acceptance, an essay on "How 4-H Has Contributed to my Growth and Development", and a letter of recommendation/support from your 4-H leader.



## Ingham County Farm Bureau Scholarship

**Due May 31, 2019**

It is the goal of the Ingham County Farm Bureau to support the industry of Agriculture, including the education of youth for future careers in our industry. Therefore, the Ingham County Farm Bureau will sponsor 2—\$1,000 scholarships each year. In order to be eligible for the scholarship, the following criteria must be met:

- The applicant must from Ingham County and an active or past 4-H or FFA member.
- Applicant must be a High School Senior or a College Freshman
- Applicant must be pursuing a 2 or 4 year certificate or degree program in an agricultural related field.
- Applicant must possess the qualities of leadership and community service.



For application, visit:

<https://www.canr.msu.edu/ingham/4-h/awards-scholarships>

## Michigan Youth Livestock Scholarship Fund

**Entries due May 17, 2019**

### Two Scholarship Options for 2019

- 1) MYLSF SCHOLARSHIP (UP TO \$5,000)
- 2) STATE-WIDE SCHOLARSHIP (UP TO \$1,000)

**LIVESTOCK**  
*Scholarship Fund*

*Both Scholarships are funded by proceeds from the Michigan State Fair Youth Livestock Auction and the Michigan Livestock Expo Auction*

Since 2000, the Michigan Youth Livestock Scholarship Fund has been awarding scholarships annually to outstanding youth who exhibit at the Michigan State Fair, Michigan livestock Expo and Michigan Dairy Expo. The fund is also responsible for supporting educational awards provided to youth livestock and dairy exhibitors each year. Funding comes from specific proceeds from the Michigan Livestock Expo Sale-Abraction. Scholarship requirements and qualifications can be viewed through the application link below.

Applications and qualification requirements for the MYLSF and the statewide scholarship can be obtained at [www.michigan.gov/mda-mylsf](http://www.michigan.gov/mda-mylsf). Applications must be postmarked no later than **May 17, 2019**. If you have any questions, please contact Jeff Haarer, Michigan Department of Agriculture and Rural, at 517-284-5642 or Ernie Birchmeier, Michigan Farm Bureau, at 517-679-5335.

## 4-H Events and Workshops

### March 1-April 30: JOANN's Clover for Kids Campaign

*Local JOANN stores, throughout Michigan*

Support Michigan 4-H by visiting your local JOANN store from March 1 – April 30 and purchasing a clover at the register for either \$1 or \$4.

<https://www.canr.msu.edu/events/joann-s-clover-for-kids-campaign>

### March 17: 4-H STEAM Sunday—China Art

*Ingham County Fairgrounds, Mason*

Learn about Chinese culture through an art exchange program. You will look at and learn about art created by students in China before creating your own art to send back.

<https://www.canr.msu.edu/events/4-h-steam-sunday-china-art>

### March 26: 4-H Parliamentary Procedure Training

*Muskegon County MSU Extension Office, Muskegon*

This training is designed for both 4-H members and volunteers who want to learn more about parliamentary procedure and how it can be used in their 4-H clubs.

<https://www.canr.msu.edu/events/muskegon-county-4-h-parliamentary-procedure-training>

### March 27-April 7: Tractor Supply Co. Paper Clover Campaign

*Local Tractor Supply Co. stores, throughout Michigan*

Visit your local Tractor Supply Company store March 27 – April 7 to purchase a paper 4-H clover for \$1 at checkout and support 4-H in your community.

<https://www.canr.msu.edu/events/tractor-supply-co-paper-clover-campaign-1>



### April 7: Mission to Mars

*Ingham County Fairgrounds, Mason*

Ever wanted to know what it was like to be an astronaut and travel to Mars? Now is your chance to think, eat and explore Mars just like a astronaut would!

<https://www.canr.msu.edu/events/mission-to-mars>

### April 13: Michigan 4-H Goat Expo

*Anthony Hall, East Lansing*

The State 4-H Goat Expo is designed for 4-H members interested in live animal evaluation and testing their knowledge of the goat industry in a fun, educational manner.

<https://www.canr.msu.edu/events/2019-michigan-4-h-goat-expo>

### April 26-28: Michigan 4-H Shooting Sports Instructor Certification Workshop

*Kettunen Center, Tustin*

All 4-H shooting sports clubs are supervised by certified 4-H shooting sports instructors. Attend to earn instructor certification in archery, rifle, shotgun, pistol or muzzle loader.

<https://www.canr.msu.edu/events/2019-michigan-4-h-shooting-sports-instructor-certification-workshop>

For the most up-to-date events listing, go to <http://4h.msue.msu.edu/events>.



**Ingham County 4-H  
Exploration Days Scholarship Request form**

Participant Name: \_\_\_\_\_

4-H Club or affiliation: \_\_\_\_\_

Years in 4-H: \_\_\_\_\_ Years attending 4-H Exploration Days: \_\_\_\_\_

Which scholarships are you requesting for 2019 Exploration Days:

- State Awards Delegate
- Financial Hardship
- New Audience
- 4-H Council and Transportation Committee

**Please explain how you have contributed to the Ingham County 4-H program (leadership and community service) and/or how you have assisted in 4-H fundraising efforts (TSC promotion, 4-H Food Booth, other efforts).**

---

---

---

---

---

---

---

---

---

---

Ingham County 4-H program strongly encourages members and volunteers/leaders to attend 4-H trainings and events beyond their club involvement including leadership trainings and workshops at Kettunen Center and Volunteer Forum; 4-H Exploration Days; Capitol Experience and National Congress; and exchange experiences. To support members and volunteers participation in these activities, 4-H Council annually allocates funding in their budget to provide scholarships. 4-H Transportation Committee also allocates funding toward scholarships; in addition project area committees or individual 4-H clubs may also choose to contribute toward members and leaders attending trainings. A copy of the annual 4-H Council budget can be found on their website to determine budgeted scholarships:

<http://ce.ingham.org/4H/4HCouncilsandCommittees/4HCouncil.aspx>

Ingham County 4-H event participation policy has been revised to state that participants who receive scholarship funding from any of the above sources and fail to fully participate in the sponsored event will be asked to repay scholarship funds provided. In addition, there are a number of opportunities throughout the year when 4-H Council seeks volunteers to serve in leadership roles or to help with fundraising efforts in return for receiving scholarship funds; **it is an expectation that the participant requesting funds has contributed to the county 4-H program through one of these opportunities prior to requesting funds.**

I have read and understand the conditions of receiving scholarships for this event.

Participant: \_\_\_\_\_

Date: \_\_\_\_\_

Parent: \_\_\_\_\_

Date: \_\_\_\_\_